

# Hygienic Fork

Series 5690



## Easy-Grip Handle

Wide handle with opening is ideal both for worker comfort and allows the fork to be hung

## Reinforced Ergonomic Handle

Handle contains an aluminum tube to increase durability, and is stepped in two places to make it easy to use

## Wide Fork Blade

The fork is wide-set to move more produce more efficiently without damaging delicate products

The Hygienic Fork has a reinforced handle with an inner aluminum tube. It is stepped in two places, which helps to prevent back injuries. It is mostly used for emptying out fresh produce from large containers.



## Hygienic Fork

5690

□  
5

The Hygienic Fork is an ideal solution for gently moving produce from tubs to processing areas. The fork can be used gently to avoid smashing delicate products such as grapes or peaches.

### Specifications:

Length: 49"

Width: 9.2"

Height: 5.1"

FDA-Compliant Raw Material: Yes

Material: Polypropylene

Unit Weight: 3.18 lbs.

### Colors

When ordering, add the color digit to the base part number to denote color.



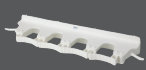
Fully updated product specifications are available at [Vikan.com](http://Vikan.com).

## The Color-Coding System

Remco and Vikan® brands offer an integrated color-coding system to help mitigate the risk of cross-contamination in food processing facilities. With an array of color-coded tools and storage brackets, and years of experience building effective color-coding systems, the experts at Remco Products Corporation can help you effectively apply color-coding to divide and identify different zones or processing tasks. As a result, workers can more easily comply with material handling and hygienic cleaning procedures to maintain stringent food safety standards.



Please see the full-line catalog for a complete list of Remco™ and Vikan® products.



Brackets



Brooms



Brushes



Shovels



Scrapers



Squeegees



Tubs



Pails

# cellar.tek

Supplier to the Commercial Beverage Industry



WINEMAKING



BREWING



CIDER MAKING



DISTILLING

